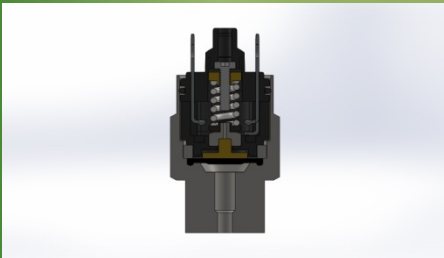


PVS Sensors Inc.

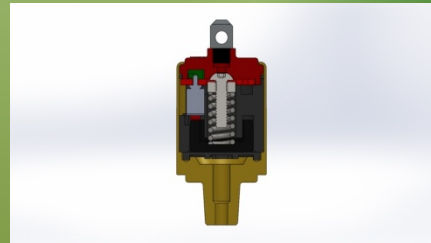
May 2018
Issue 32

Pressure Switches ...Creep Action vs Snap Action, What is the difference?

CREEP Action



SNAP Action



Creep action slowly opens or closes contacts to give an electrical signal. The creep design operates so that there is little or no pressure differential between the opening and closing point of the contacts. The contact is allowed to flex to maintain pressure above the set point.

Snap action devices instantaneously open or close an electrical circuit directly when pressure is reached. Snap action has a wider pressure differential depending on micro switch travel (pressure on micro switch button and release).

EPA / EPF



PMA / PMF



APA / APF



BPA / BPF



BMA/BMF



For more details Call Toll Free: 800-988-1276

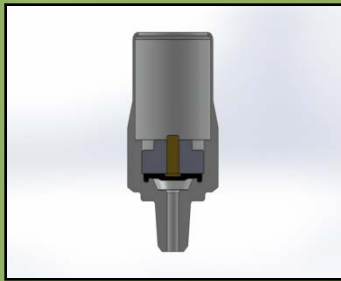
PVS Sensors Inc
2810 Blue Ridge Blvd
PO Box 100
West Union, SC 29696



Toll Free: 800-988-1276
Phone: 864-638-5544
Fax: 864-638-0005
Website: www.pvssensors.com

WHAT'S NEW.....????

PVS Switch Product Options



PVS offers various diaphragm materials such as Buna, Viton, EPDM and **Low Temp Nitrile**, etc to be compatible with different materials and temperatures.



PVS offers various electrical connections such as **Weather packs, Lighted Dins, Molded in Cables, M12 Cable Assemblies, etc.** to increase compatibility with a broad range of customer requirements.

For more details
Call Toll Free: 800-988-1276

Please Note:
Our complete catalog can
be accessed at
www.pvssensors.com



Ask the Editor:

Please submit all questions / correspondence to: brianl@pvssensors.com

E-mail Contact Information:

President:
Brian Lyles
brianl@pvssensors.com

Sales:
sales@pvssensors.com

Mark Berger
markb@pvssensors.com

Lisa Burdette
lisab@pvssensors.com

Engineering:
Alex Adams
alexa@pvssensors.com

PVS Sensors Inc
2810 Blue Ridge Blvd
PO Box 100
West Union, SC 29696

Toll Free: 800-988-1276
Phone: 864-638-5544
Fax: 864-638-0005
Website: www.pvssensors.com